

## Subminiature Krypton Lamps with Lens-End

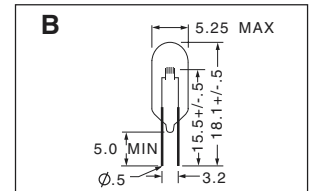
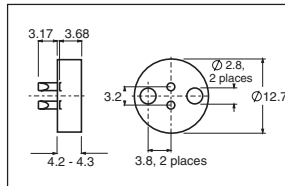
Line No.	Part No.	Volts	Amps	Lumens	Color Temp. Degrees Kelvin	Life Hours	Filament Type	Filament Dimensions Lgth. x Dia.	Drawing
1	187-1	4.2	1.05	50	3,000	650	C-6	1.3 X 0.45	A
2	188-1	5.0	1.00	42	2,800	10,000	C-6	1.6 X 0.7	A

Recommended Holder/Socket H720 specified below.

### H720

**Material**  
 Natural Teflon  
 Pin shell: Brass  
 Contacts: Beryllium Copper

**Maximum Ratings**  
 12 Volts  
 4.0 Amps  
 120°C



## Subminiature Krypton Lamps with Clear-End

Line No.	Part No.	Volts	Amps	Lumens	Color Temp. Degrees Kelvin	Life Hours	Filament Type	Filament Dimensions Lgth. x Dia.	Drawing
3	187	4.2	1.05	50	3,000	650	C-6	1.3 X 0.45	B
4	188	5.0	1.00	42	2,800	10,000	C-6	1.6 X 0.7	B

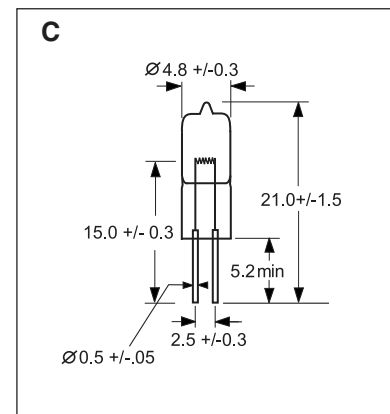
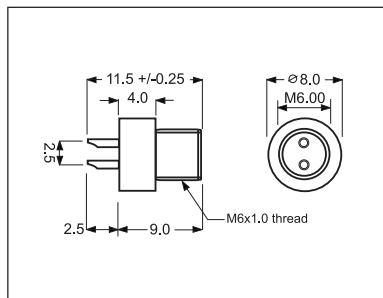
Recommended Holder/Socket H720 specified above.

### H250

**Materials**  
 Base: Natural Teflon  
 Pin Shell: Tin/Lead over nickel  
 Contact Finish: Tin/Lead over nickel

**Maximum Ratings:**

12 Volts  
 4.0 Amps  
 120°C



## Subminiature Halogen Lamp

Line No.	Part No.	Volts	Amps	Lumens	Color Temp. Degrees Kelvin	Life Hours	Filament Type	Filament Dimensions Lgth. x Dia.	Drawing
5	288	5.0	0.90	54	2,850	600	C-6	2.6 x 296µm	C
		6.0	1.00	100	3,050	100			



**InternationalLight**  
 TECHNOLOGIES

10 Technology Drive  
 Peabody, MA 01960  
 USA  
 Tel: 978-818-6180  
 Fax: 978-818-6181  
 ilsales@intl-lighttech.com  
 www.intl-lighttech.com