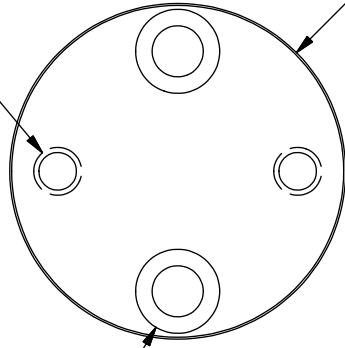


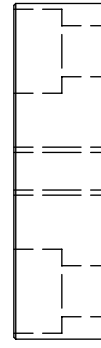
1/4-20 UNC - 2B  
THRU  
2 HOLES ON R0.625 B.C.



Ø1.749  
Ø1.748

Ø0.266 THRU  
Ø0.438  $\nabla$  0.250  
2 HOLES ON R0.625 B.C.

0.01-0.02 x 45°  
2 PLACES



0.500

**NOTES**

1. Machine all surfaces
2. Anodize black

1	2	PFS11012
ITEM	QTY	DESCRIPTION
Bill of Material		

<b>THE OBSERVATORIES OF THE CARNEGIE INSTITUTION OF WASHINGTON</b> 813 Santa Barbara Street Pasadena, CA 91101					
MATERIAL		UNLESS OTHERWISE SPECIFIED FRACTIONAL    DECIMAL    ANGULAR +/- 1/32    .XX +/- 0.01    +/- 0.1 DEG			
EST WEIGHT		.XXX +/- 0.002 GOAL .XXX +/- 0.005 REQD BREAK SHARP EDGES    MACHINED SURFACES 125 $\sqrt{\hspace{1cm}}$ ALL DIMENSIONS IN INCHES			
SCALE		1:1		<b>P lanet F inder S pectrograph</b>	
DWN	CRANE	6/13/2006		SHEET	DRAWING NUMBER
APVD				<b>A</b>	<b>PFS11012</b>
BY	DATE			SHT 1 OF 1	REV 2