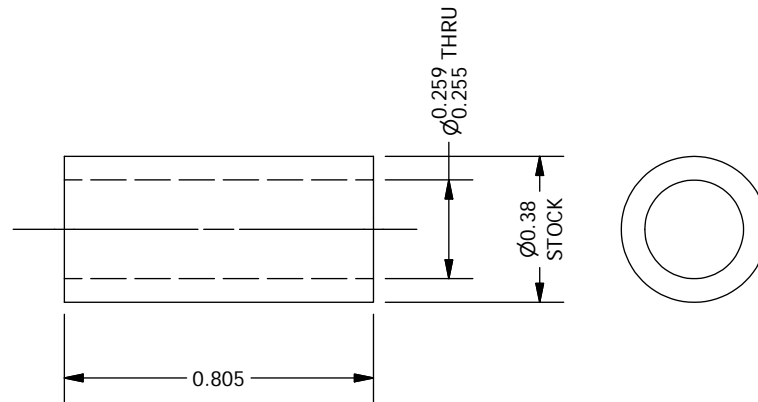


PFS100009



PFS100010

Notes:

1. Black anodize after machining
2. Design borrowed from Steve Gunnels; MIKE spectrograph drawings 00M15258/59

2	1	PFS10010
1	1	PFS10009
ITEM	QTY	DESCRIPTION
Bill of Material		
THE OBSERVATORIES OF THE CARNEGIE INSTITUTION OF WASHINGTON 813 Santa Barbara Street Pasadena, CA 91101		
MATERIAL		UNLESS OTHERWISE SPECIFIED FRACTIONAL DECIMAL ANGULAR +/- 1/32 .XX +/- 0.01 +/- 0.1 DEG .XXX +/- 0.002 GOAL .XXX +/- 0.005 REQD BREAK SHARP EDGES MACHINED SURFACES 125 $\sqrt{\hspace{1cm}}$ ALL DIMENSIONS IN INCHES
Aluminum-6061		
EST WEIGHT		
SCALE		P lanet F inder S pectrograph Camera Focus Actuator Worm Shaft Spacers
2:1		
DWN	CRANE	2/15/2006
APVD		
	BY	DATE
SHEET	DRAWING NUMBER	
A	PFS10009-10	
	SHT 1	REV
	OF 1	