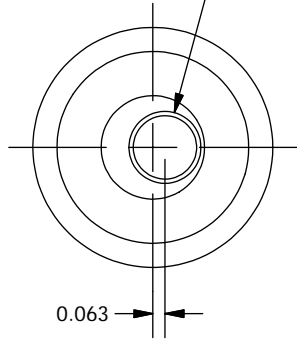


TAP DR \varnothing .332 X 1 3/8 DP
 DR & RM \varnothing .3750/.3755 X .56 DP
 TAP 3/8-24 UNF - 2B X 1" DP
 LOCATE OFF CENTER AS SHOWN



\varnothing 0.188 THRU
 TO BE DRILLED BOTH THRU
 SHAFT AND WORM GEAR (PFS10007)
 HUB TOGETHER DURING ASSEMBLY
 SEE ASSEMBLY DRWG

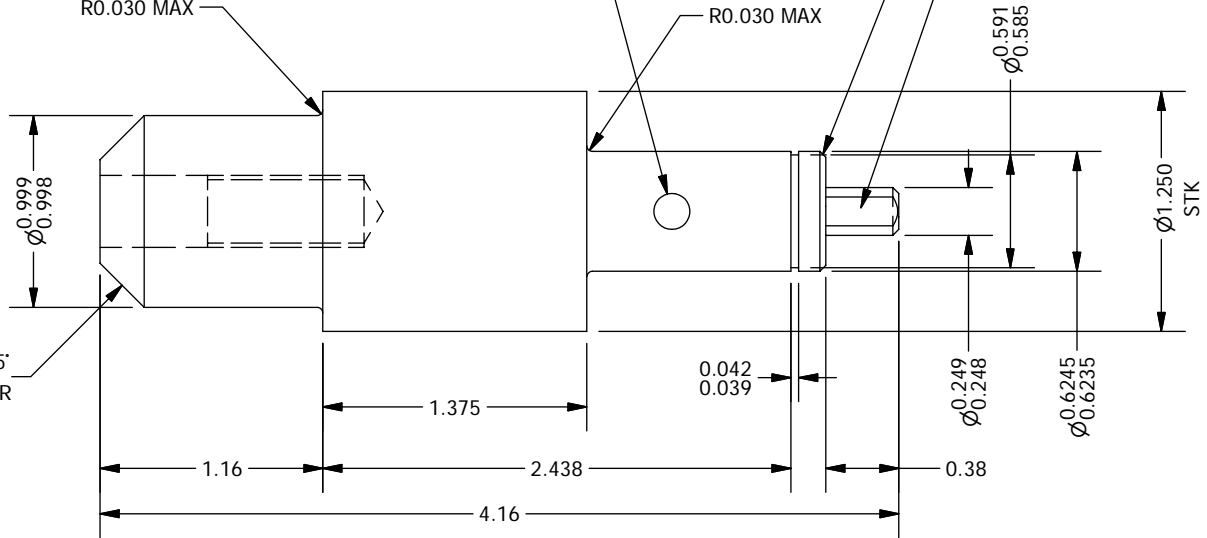
0.031 X 45° CHAMFER
 2 PLACES

R0.030 MAX

R0.030 MAX

MACHINE 0.15 WIDE FLAT

0.23 X 45°
 CHAMFER



Notes:

1. Black anodize after machining
2. Design borrowed from Steve Gunnels; MIKE spectrograph drawing 00M15255

THE OBSERVATORIES
 OF THE CARNEGIE INSTITUTION OF WASHINGTON
 813 Santa Barbara Street
 Pasadena, CA 91101

MATERIAL	Aluminum-6061	UNLESS OTHERWISE SPECIFIED		
EST WEIGHT	4.3 oz	FRACTIONAL +/- 1/32	DECIMAL .XX +/- 0.01	ANGULAR +/- 0.1 DEG
SCALE	1:1	.XXX +/- 0.002 GOAL .XXX +/- 0.005 REQD BREAK SHARP EDGES MACHINED SURFACES 125° ALL DIMENSIONS IN INCHES		

P lanet
 F inder
 S spectrograph
 Camera Focus Actuator
 Drive Shaft

1	1	PFS10006
ITEM	QTY	DESCRIPTION
Bill of Material		

DWN	CRANE	2/15/2006	SHEET	DRAWING NUMBER	SHT 1	REV
APVD	BY	DATE	A	PFS10006	OF 1	