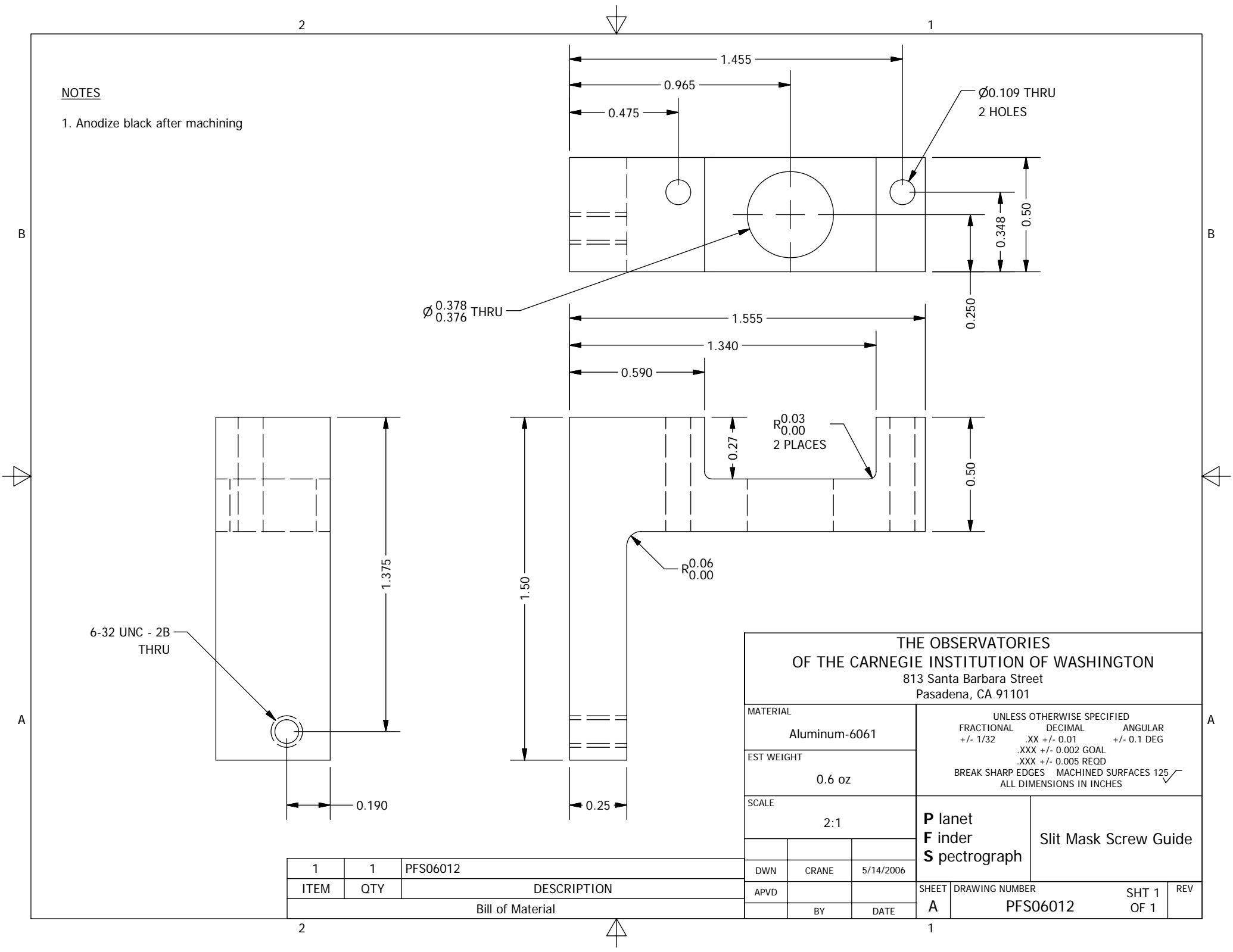


**NOTES**

1. Anodize black after machining



THE OBSERVATORIES  
OF THE CARNEGIE INSTITUTION OF WASHINGTON  
813 Santa Barbara Street  
Pasadena, CA 91101

MATERIAL	UNLESS OTHERWISE SPECIFIED		
Aluminum-6061	FRACTIONAL	DECIMAL	ANGULAR
	+/- 1/32	.XX +/- 0.01	+/- 0.1 DEG
EST WEIGHT	.XXX +/- 0.002 GOAL		
0.6 oz	.XXX +/- 0.005 REQD		
	BREAK SHARP EDGES MACHINED SURFACES 125 $\sqrt{\hspace{1cm}}$		
	ALL DIMENSIONS IN INCHES		

SCALE	2:1		P lanet F inder S pectrograph	Slit Mask Screw Guide
DWN	CRANE	5/14/2006		

1	1	PFS06012
ITEM	QTY	DESCRIPTION
Bill of Material		

APVD			SHEET	DRAWING NUMBER	SHT 1	REV
	BY	DATE	A	PFS06012	OF 1	