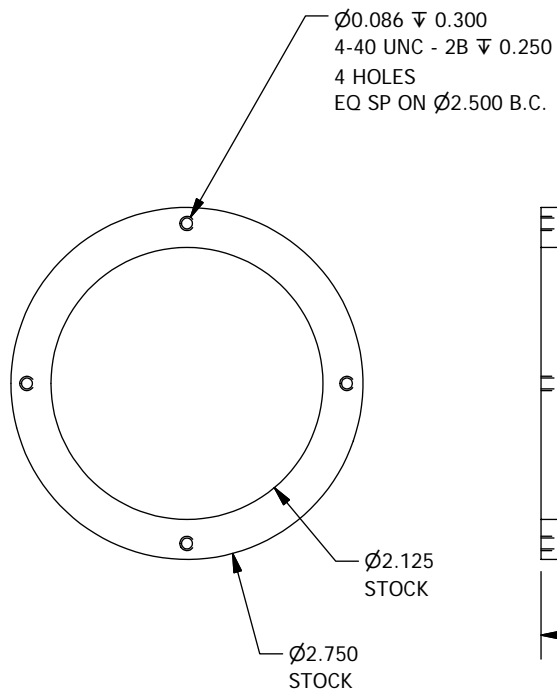


2

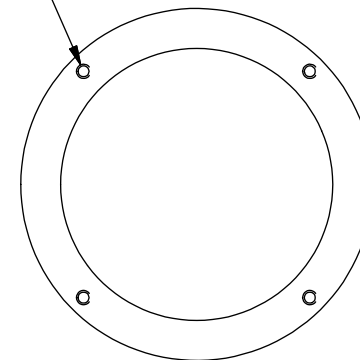
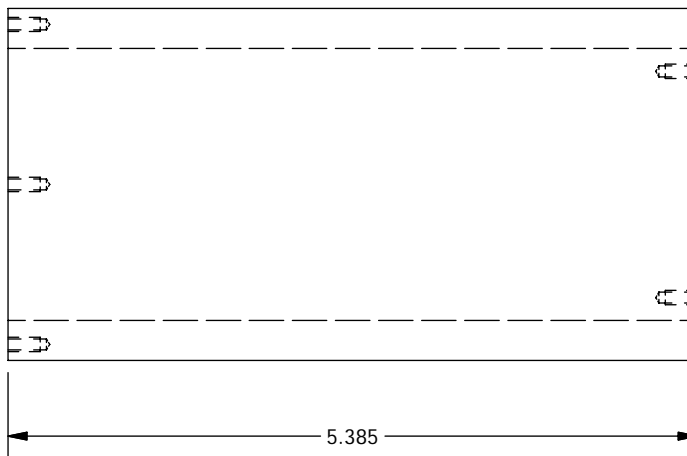
1

B

B



Ø0.086 ± 0.300
4-40 UNC - 2B ± 0.250
4 HOLES
EQ SP ON Ø2.500 B.C.
ROTATED 45° W.R.T. OTHER END



NOTES

1. Anodize black

| 1 | 1 | PFS04056 |
|------------------|-----|-------------|
| ITEM | QTY | DESCRIPTION |
| Bill of Material | | |

| | | | | |
|--|----------------|--|--------------|---------------------|
| THE OBSERVATORIES OF THE CARNEGIE INSTITUTION OF WASHINGTON 813 Santa Barbara Street Pasadena, CA 91101 | | | | |
| MATERIAL | | UNLESS OTHERWISE SPECIFIED | | |
| Aluminum-6061 | | FRACTIONAL | DECIMAL | ANGULAR |
| | | +/- 1/32 | .XX +/- 0.01 | +/- 0.1 DEG |
| EST WEIGHT | | .XXX +/- 0.002 GOAL | | |
| 1.3 lb | | .XXX +/- 0.005 REQD | | |
| SCALE | | BREAK SHARP EDGES MACHINED SURFACES 125 ✓ | | |
| 1:2 | | ALL DIMENSIONS IN INCHES | | |
| | | P lanet F inder S pectrograph | | QTH Lamp Mount Tube |
| DWN | CRANE | 6/14/2007 | | |
| APVD | | | | |
| BY | | DATE | | |
| SHEET | DRAWING NUMBER | | SHT 1 | REV |
| A | PFS04056 | | OF 1 | |

2

1

A

A