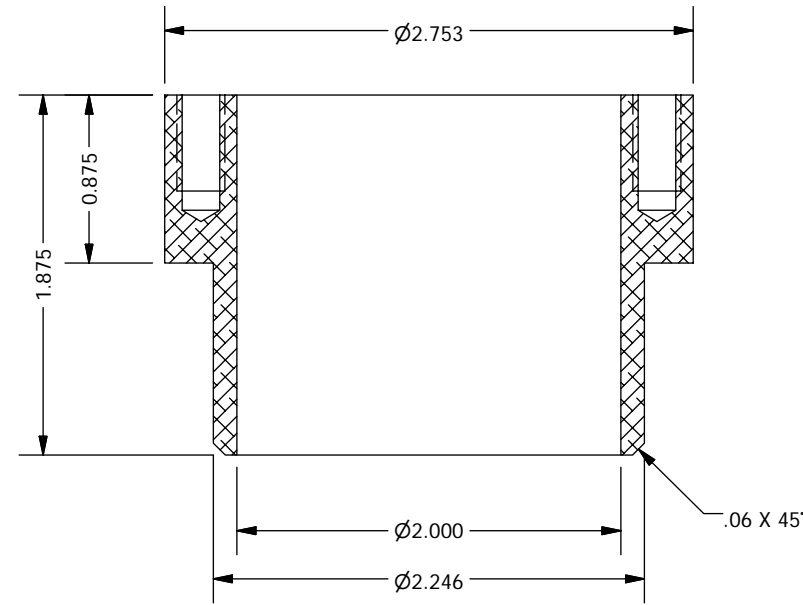


**NOTES**

- 1. Anodize black
- 2. Parts get epoxied to G10 tubes (PFS04015). Nominal epoxy layer thickness is 0.004. Adjust Ø2.246 dimension as necessary after measurement of actual tube I.D.



1	4	PFS04016
ITEM	QTY	DESCRIPTION
Bill of Material		
<b>THE OBSERVATORIES OF THE CARNEGIE INSTITUTION OF WASHINGTON</b> 813 Santa Barbara Street Pasadena, CA 91101		
MATERIAL		UNLESS OTHERWISE SPECIFIED FRACTIONAL DECIMAL ANGULAR +/- 1/32 .XX +/- 0.01 +/- 0.1 DEG .XXX +/- 0.002 GOAL .XXX +/- 0.005 REQD BREAK SHARP EDGES MACHINED SURFACES 125 ✓ ALL DIMENSIONS IN INCHES
Aluminum-6061		
EST WEIGHT		P lanet F nder S pectrograph Pre Slit Support Arm Cap 1
5.0 oz		
SCALE		SHEET DRAWING NUMBER A PFS04016 SHT 1 OF 1 REV 1
1:1		
DWN	CRANE	8/23/2007
APVD	BY	DATE