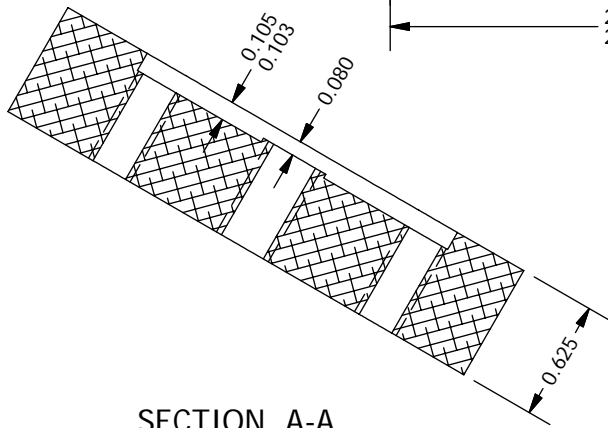


**DETAIL B**  
SCALE 2 : 1



**SECTION A-A**  
SCALE 1 : 1

**NOTES**

1 . Goal is to have a slip fit with PFS02010 with 0.001-0.002 clearance

THE OBSERVATORIES  
OF THE CARNEGIE INSTITUTION OF WASHINGTON  
813 Santa Barbara Street  
Pasadena, CA 91101

|                  |  |             |           |       |                            |                |             |     |
|------------------|--|-------------|-----------|-------|----------------------------|----------------|-------------|-----|
| MATERIAL         |  | Steel, Mild |           |       | UNLESS OTHERWISE SPECIFIED |                |             |     |
| EST WEIGHT       |  | 1.0 lb      |           |       | FRACTIONAL                 | DECIMAL        | ANGULAR     |     |
| SCALE            |  | 1:1         |           |       | +/- 1/32                   | .XX +/- 0.01   | +/- 0.1 DEG |     |
| DWN              |  | CRANE       | 4/26/2006 |       | .XXX +/- 0.002 GOAL        |                |             |     |
| APVD             |  |             |           |       | .XXX +/- 0.005 REQD        |                |             |     |
| BY               |  | DATE        |           | SHEET |                            | DRAWING NUMBER | SHT 1       | REV |
| Bill of Material |  |             |           | A     |                            | PFS02008       | OF 1        |     |

|                  |     |             |
|------------------|-----|-------------|
| 1                | 1   | PFS02008    |
| ITEM             | QTY | DESCRIPTION |
| Bill of Material |     |             |