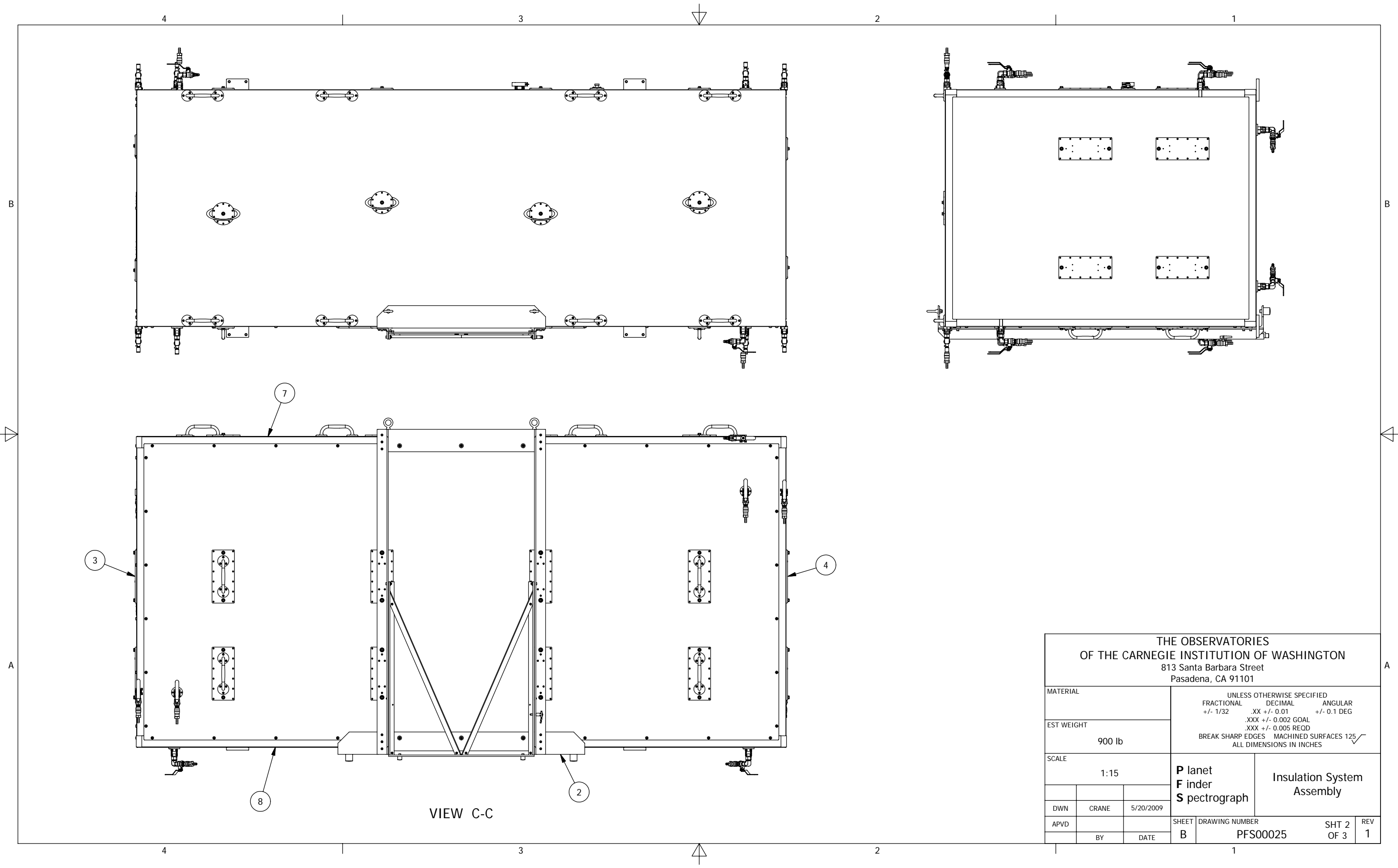


NOTES

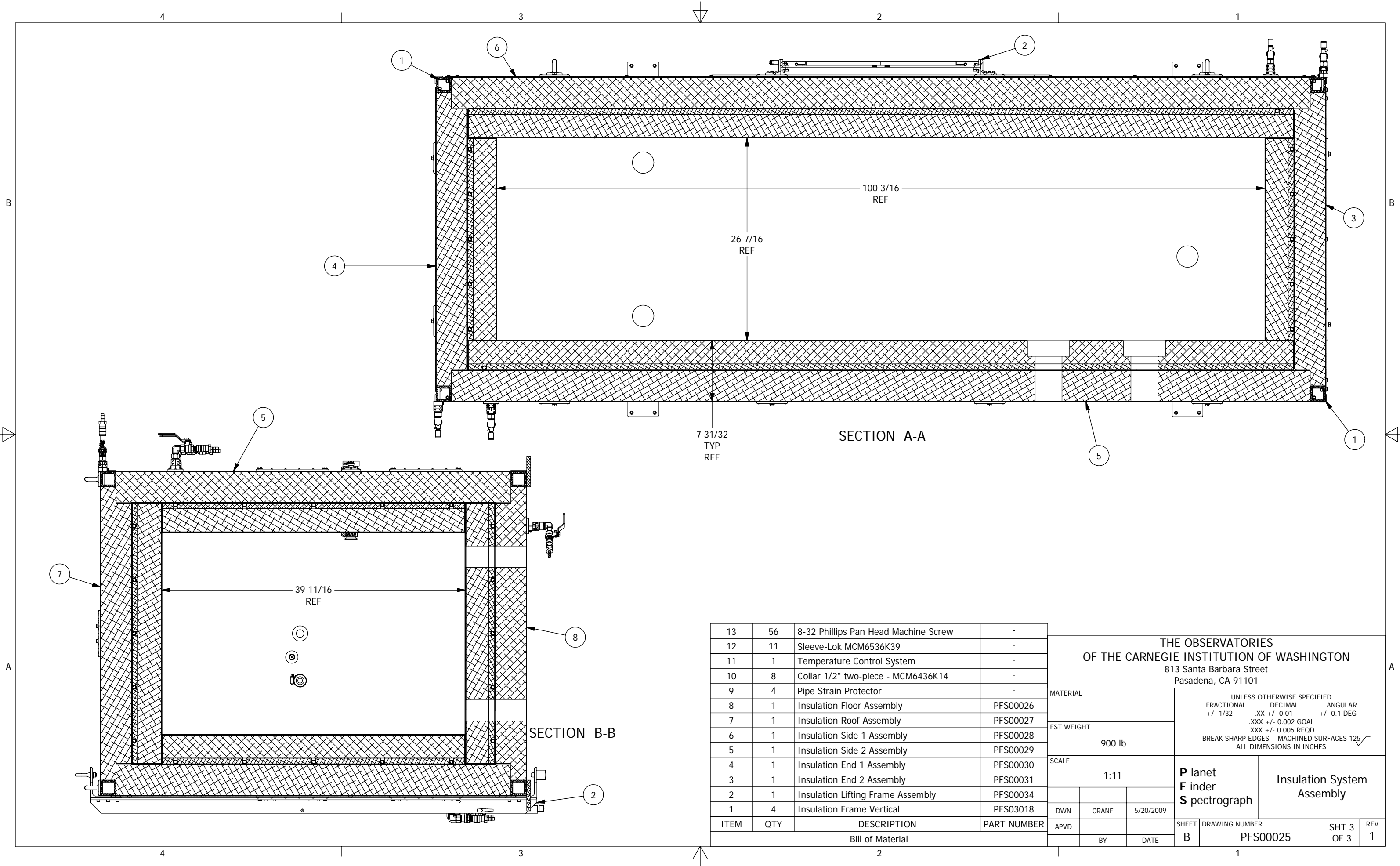
1. Most rivets and screws not shown

| | | | | |
|--|-------|---|--|---------|
| THE OBSERVATORIES OF THE CARNEGIE INSTITUTION OF WASHINGTON 813 Santa Barbara Street Pasadena, CA 91101 | | | | |
| MATERIAL | | UNLESS OTHERWISE SPECIFIED FRACTIONAL DECIMAL ANGULAR +/- 1/32 .XX +/- 0.01 +/- 0.1 DEG | | |
| EST WEIGHT | | .XXX +/- 0.002 GOAL .XXX +/- 0.005 REQD BREAK SHARP EDGES MACHINED SURFACES 125 | | |
| SCALE | | 1:15 P lanet F nder S pectrograph Insulation System Assembly | | |
| DWN | CRANE | 5/20/2009 | | SHEET B |
| APVD | BY | DATE | | |
| | | DRAWING NUMBER | | SHT 1 |
| | | PFS00025 | | OF 3 |
| | | | | REV 1 |



| | | | | | |
|--|-------|---|---|-------------------------------|------------|
| THE OBSERVATORIES OF THE CARNEGIE INSTITUTION OF WASHINGTON 813 Santa Barbara Street Pasadena, CA 91101 | | | | | |
| MATERIAL | | UNLESS OTHERWISE SPECIFIED FRACTIONAL .XX +/- 0.01 ANGULAR +/- 0.1 DEG +/- 1/32 .XXX +/- 0.002 GOAL .XXX +/- 0.005 REQD BREAK SHARP EDGES MACHINED SURFACES 125 | | | |
| EST WEIGHT | | 900 lb | | | |
| SCALE | | 1:15 | | | |
| | | P lanet F nder S pectrograph | | Insulation System Assembly | |
| DWN | CRANE | 5/20/2009 | | SHEET | REV |
| APVD | BY | DATE | B | DRAWING NUMBER | SHT 2 OF 3 |
| | | | | PFS00025 | 1 |

VIEW C-C



| | | | |
|------|-----|--------------------------------------|-------------|
| 13 | 56 | 8-32 Phillips Pan Head Machine Screw | - |
| 12 | 11 | Sleeve-Lok MCM6536K39 | - |
| 11 | 1 | Temperature Control System | - |
| 10 | 8 | Collar 1/2" two-piece - MCM6436K14 | - |
| 9 | 4 | Pipe Strain Protector | - |
| 8 | 1 | Insulation Floor Assembly | PFS00026 |
| 7 | 1 | Insulation Roof Assembly | PFS00027 |
| 6 | 1 | Insulation Side 1 Assembly | PFS00028 |
| 5 | 1 | Insulation Side 2 Assembly | PFS00029 |
| 4 | 1 | Insulation End 1 Assembly | PFS00030 |
| 3 | 1 | Insulation End 2 Assembly | PFS00031 |
| 2 | 1 | Insulation Lifting Frame Assembly | PFS00034 |
| 1 | 4 | Insulation Frame Vertical | PFS03018 |
| ITEM | QTY | DESCRIPTION | PART NUMBER |

**THE OBSERVATORIES
OF THE CARNEGIE INSTITUTION OF WASHINGTON**
813 Santa Barbara Street
Pasadena, CA 91101

| | | | |
|---------------------------|--|---|--|
| MATERIAL | | UNLESS OTHERWISE SPECIFIED FRACTIONAL DECIMAL ANGULAR +/- 1/32 .XX +/- 0.01 +/- 0.1 DEG | |
| EST WEIGHT | | .XXX +/- 0.002 GOAL .XXX +/- 0.005 REQD BREAK SHARP EDGES MACHINED SURFACES 125 | |
| SCALE | | ALL DIMENSIONS IN INCHES | |
| 1:11 | | P lanet F nder S pectrograph | |
| DWN CRANE 5/20/2009 | | Insulation System Assembly | |
| APVD BY DATE | | SHEET DRAWING NUMBER SHT 3 REV B PFS00025 OF 3 1 | |

Bill of Material