

NOTES
 1. Most rivets and screws not shown

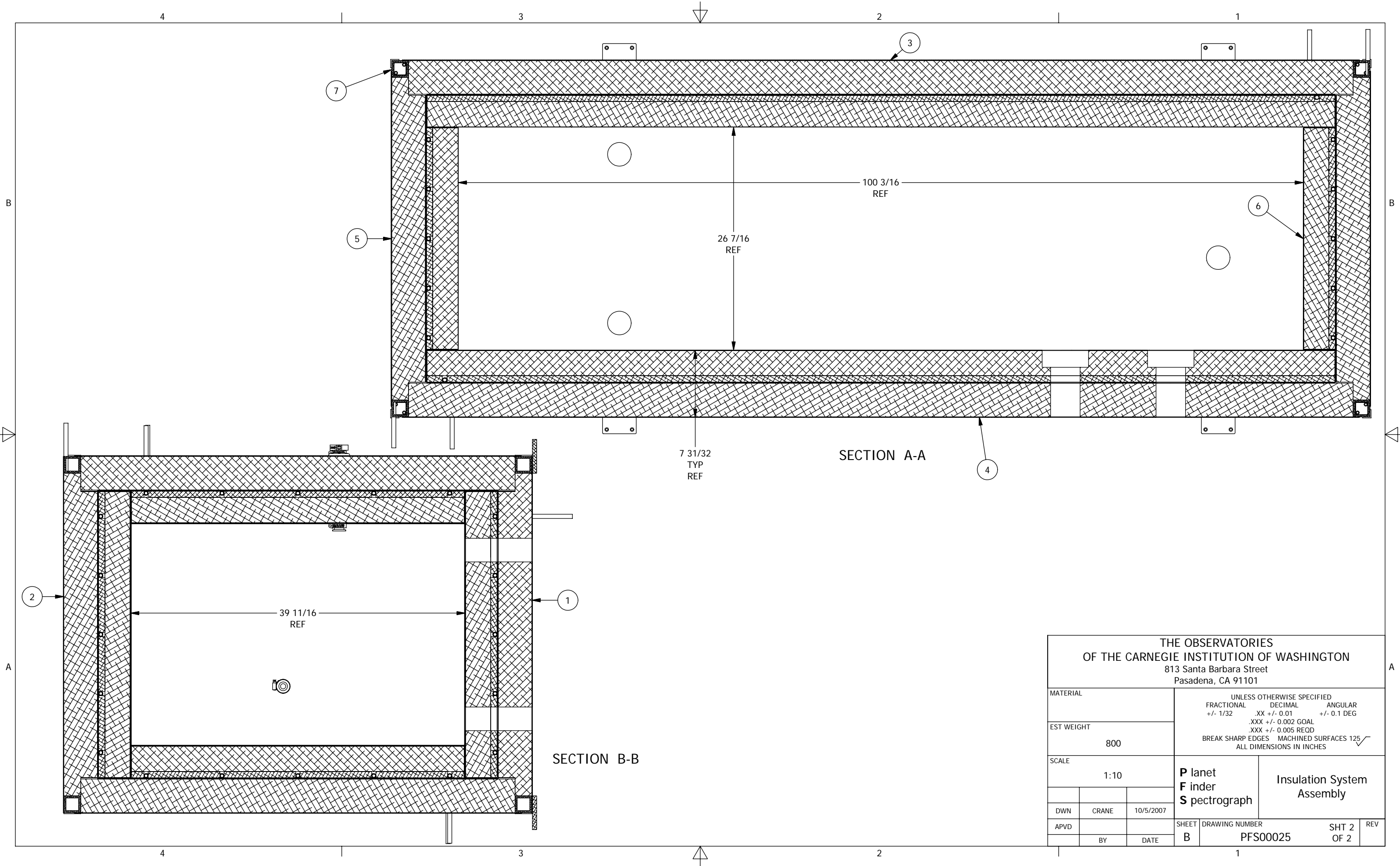
7	4	Insulation Frame Vertical	PFS03018
6	1	Insulation End 2 Assembly	PFS00031
5	1	Insulation End 1 Assembly	PFS00030
4	1	Insulation Side 2 Assembly	PFS00029
3	1	Insulation Side 1 Assembly	PFS00028
2	1	Insulation Roof Assembly	PFS00027
1	1	Insulation Floor Assembly	PFS00026
ITEM	QTY	DESCRIPTION	PART NUMBER

Bill of Material

**THE OBSERVATORIES
 OF THE CARNEGIE INSTITUTION OF WASHINGTON**
 813 Santa Barbara Street
 Pasadena, CA 91101

MATERIAL	UNLESS OTHERWISE SPECIFIED FRACTIONAL DECIMAL ANGULAR +/- 1/32 .XX +/- 0.01 +/- 0.1 DEG		
EST WEIGHT	800 lb		
SCALE	1:15		
DWN	CRANE	10/5/2007	P lanet F nder S pectrograph
APVD	BY	DATE	
SHEET		DRAWING NUMBER	SHT 1
B		PFS00025	OF 2
			REV

Insulation System Assembly



SECTION A-A

SECTION B-B

THE OBSERVATORIES OF THE CARNEGIE INSTITUTION OF WASHINGTON 813 Santa Barbara Street Pasadena, CA 91101					
MATERIAL			UNLESS OTHERWISE SPECIFIED FRACTIONAL DECIMAL ANGULAR +/- 1/32 .XX +/- 0.01 +/- 0.1 DEG .XXX +/- 0.002 GOAL .XXX +/- 0.005 REQD BREAK SHARP EDGES MACHINED SURFACES 125 ✓ ALL DIMENSIONS IN INCHES		
EST WEIGHT			800		
SCALE			1:10		
			P lanet F nder S pectrograph		Insulation System Assembly
DWN	CRANE	10/5/2007	SHEET		REV
APVD	BY	DATE	B	DRAWING NUMBER	SHT 2 OF 2
			PFS00025		1