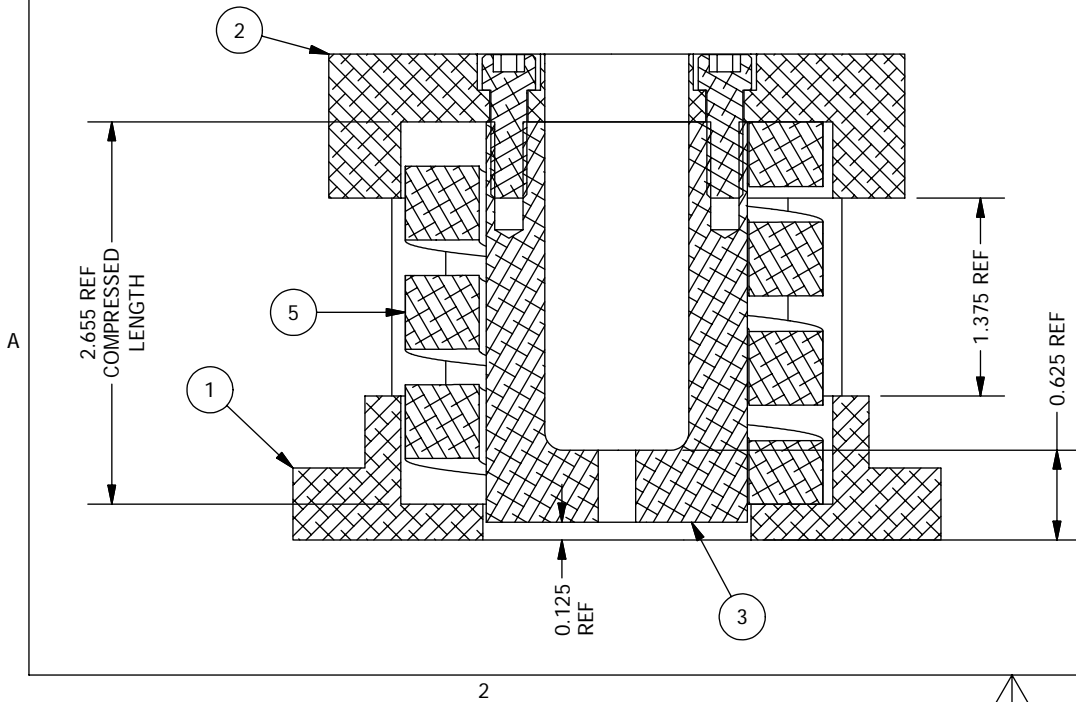


NOTE: Die spring rate is 2900 lbs/inch. Specified compression provides 1000 lbs.



ITEM	QTY	DESCRIPTION	PART NUMBER
6	4	SHCS 1/4-20 UNCx0.75	-
5	1	Die Spring MCM9622K24	-
4	4	SHCS 3/8-16 UNCx3	-
3	1	Torque/Tension Test Assembly 1/4-20 Tube	PFS14013
2	1	Torque/Tension Test Assembly Top Plate	PFS14011
1	1	Torque/Tension Test Assembly Bottom Plate	PFS14012

Bill of Material

THE OBSERVATORIES
OF THE CARNEGIE INSTITUTION OF WASHINGTON
813 Santa Barbara Street
Pasadena, CA 91101

MATERIAL	UNLESS OTHERWISE SPECIFIED FRACTIONAL DECIMAL ANGULAR +/- 1/32 .XX +/- 0.01 +/- 0.1 DEG .XXX +/- 0.002 GOAL .XXX +/- 0.005 REQD BREAK SHARP EDGES MACHINED SURFACES 125 ✓ ALL DIMENSIONS IN INCHES		
EST WEIGHT	4.9 lb		
SCALE	3:4		P lanet F nder S pectrograph Torque/Tension Test Assembly
DWN	CRANE	6/6/2006	
APVD			SHEET DRAWING NUMBER SHT 1 REV A PFS00016 OF 1
	BY	DATE	