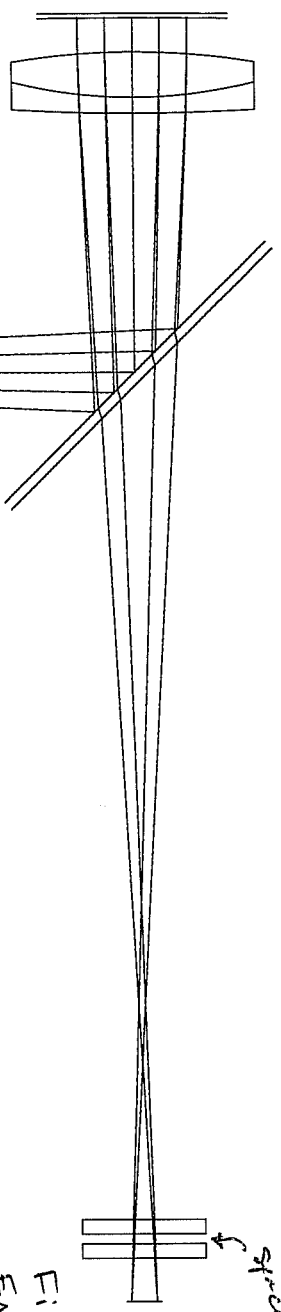


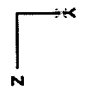
MIRrors  
 EM106 23-4179  
 25.4 x 50.8 mm

JML 14165  
 DBL  
 OD  $\phi$  50.0 mm  
 Cell ID  $\phi$  1.979"  
 CA  $\phi$  1.811"



CNI Laser  
 W1-SAW-2008-UV-425-675-450MP  
 silica window  
 AR coat on 1 side  
 2.000 x 2.000" x 2.0mm thick  
 Mount cavity 2.010 x 2.010"

Filters  
 EX106 CAT#209  
 G9475  $\phi$  25.4mm  
 cat# 36-9421  
 400-615 short pass  
 $\phi$  25.4mm  
 cat# 40-0021  
 CELLID  $\phi$  1.010  
 CA  $\phi$  0.980



3D LAYOUT

PLANET FINDER SPECTROGRAPH FOCAL REDUCER  
 SAT JUN 7 2008

CARNEGIE OBSERVATORIES  
 813 SANTA BARBARA STREET  
 PASADENA, CA 91101

PFS-PUPILVIEW-11.ZMX