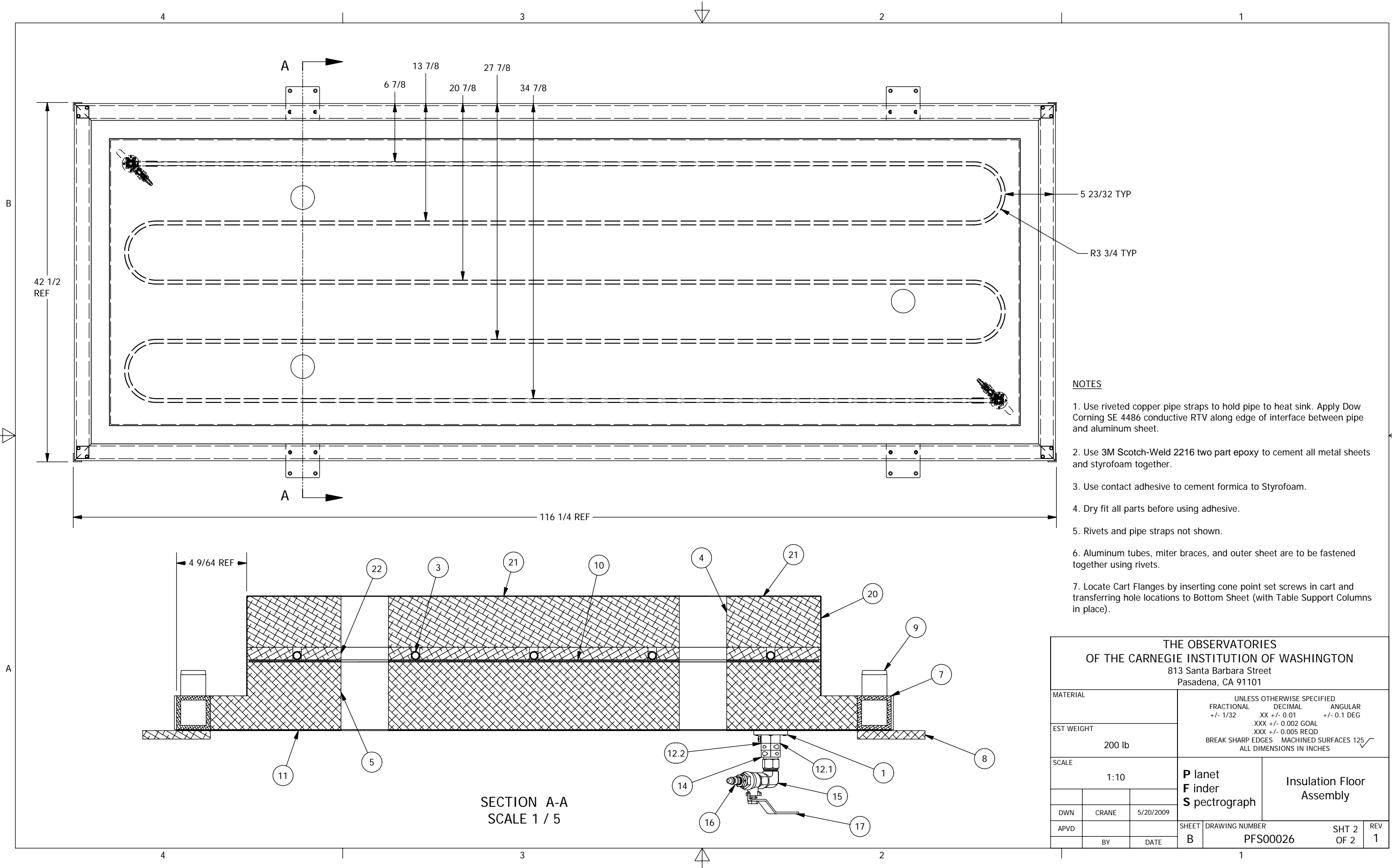


ITEM	QTY	DESCRIPTION	PART NUMBER	ITEM	QTY	DESCRIPTION	PART NUMBER	ITEM	QTY	DESCRIPTION	PART NUMBER
22	1	Styrofoam 3/4" Layer	-								
21	1	Formica, black	-								
20	2	Formica, black	-	12.5	2	SHCS 6-32 UNCx0.5	-				
19	2	Formica, black	-	12.4	2	Washer, ANSI A, Normal #6	-	8	4	Insulation Cart Flange	PFS03014
18	8	SHCS 1/4-20 UNCx0.5	-	12.3	2	Hex Nut 6-32	-	7	2	Insulation Frame Horizontal Long - Floor	PFS03015
17	2	1/4 NPT Ball Valve	-	12.2	1	Tube Stiffener Clamp Anchor	PFS03043	6	2	Insulation Frame Horizontal Short	PFS03017
16	2	Quick Disconnect Coupling MCM1077T17	-	12.1	1	Tube Stiffener Clamp	PFS03044	5	1	Insulation Floor/Roof 4" Foam	PFS03019
15	2	Swage-Lok Elbow 1/2" to 1/4 NPT	-	12	2	Pipe Strain Protector	-	4	1	Insulation Floor/Roof 3" Foam	PFS03022
14	4	Collar 1/2" two-piece - MCM6436K14	-	11	1	Insulation Floor Bottom Sheet	PFS03001	3	1	Insulation Floor Water Jacket	PFS03025
13	8	1/8 X .375 Std Pop Rivet	-	10	1	Insulation Floor Heat Sink	PFS03002	2	4	Insulation Frame Miter Brace	PFS03029
12.6	2	SHCS 6-32 UNCx1	-	9	4	Insulation Vertical Post Coupling	PFS03013	1	2	Tube Stiffener Base Plate	PFS03042
Bill of Material				Bill of Material				Bill of Material			

**THE OBSERVATORIES
OF THE CARNEGIE INSTITUTION OF WASHINGTON**
813 Santa Barbara Street
Pasadena, CA 91101

MATERIAL		UNLESS OTHERWISE SPECIFIED FRACTIONAL .XX +/- 0.01 +/- 0.1 DEG DECIMAL .XXX +/- 0.002 GOAL ANGULAR .XXX +/- 0.005 REQD BREAK SHARP EDGES MACHINED SURFACES 125 ALL DIMENSIONS IN INCHES	
EST WEIGHT			
200 lb		P lanet F inder S pectrograph I nsulation Floor A ssembly	
SCALE			
1:10			
DWN	CRANE	5/20/2009	
APVD	BY	DATE	
SHEET		DRAWING NUMBER	
B		PFS00026	
SHT 1		REV 1	
OF 2			



NOTES

1. Use riveted copper pipe straps to hold pipe to heat sink. Apply Dow Corning SE 4486 conductive RTV along edge of interface between pipe and aluminum sheet.
2. Use 3M Scotch-Weld 2216 two part epoxy to cement all metal sheets and styrofoam together.
3. Use contact adhesive to cement formica to Styrofoam.
4. Dry fit all parts before using adhesive.
5. Rivets and pipe straps not shown.
6. Aluminum tubes, miter braces, and outer sheet are to be fastened together using rivets.
7. Locate Cart Flanges by inserting cone point set screws in cart and transferring hole locations to Bottom Sheet (with Table Support Columns in place).

THE OBSERVATORIES OF THE CARNEGIE INSTITUTION OF WASHINGTON 813 Santa Barbara Street Pasadena, CA 91101				
MATERIAL		UNLESS OTHERWISE SPECIFIED FRACTIONAL DECIMAL ANGULAR +/- 1/32 .XX +/- 0.01 +/- 0.1 DEG		
EST WEIGHT		.XXX +/- 0.002 GOAL .XXX +/- 0.005 REQD BREAK SHARP EDGES MACHINED SURFACES 125		
SCALE		1:10 P lanet F nder S pectrograph Insulation Floor Assembly		
DWN	CRANE	5/20/2009		
APVD	BY	DATE	SHEET	REV
			B	1
		DRAWING NUMBER		SHT 2
		PFS00026		OF 2

**SECTION A-A
SCALE 1 / 5**